

# Dane County EMS

## 2024 Cardiac Arrest Statistics

Updated May 28, 2025

Authored by Eric Anderson



## Background

As part of Dane County's participation in the Cardiac Arrest Registry to Enhance Survival (CARES) program, we get a detailed look at our cardiac arrest outcomes compared to national and statewide figures. This information is meant to inform and strengthen our pursuit of becoming a leader in out-of-hospital cardiac arrest (OOHCA) resuscitation. This document will evaluate Dane County's CARES summary data from 2017 through 2024. This report looks at non-traumatic cardiac arrests that either received resuscitation from EMS or had defibrillation prior to EMS arrival in Dane County. Moving forward, Dane County EMS will continue to track our cardiac arrest outcomes to ensure long-term sustained improvement. We at Emergency Management would like to thank our partners at the Dane County Public Safety Communications Center, our team of medical advisors, first response agencies, and healthcare facilities for their continued partnership in our pursuit of improvement.

Submission to the CARES registry requires one of the following criteria be met:

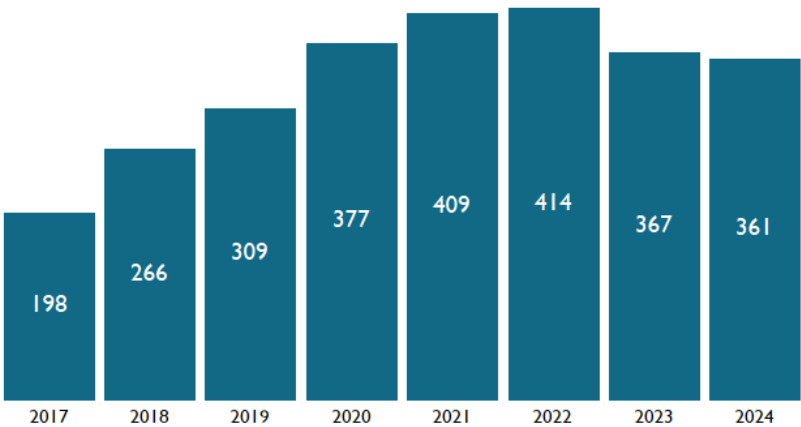
- The patient receives chest compressions or defibrillation by EMS
- The patient receives defibrillation from an AED prior to EMS arrival

# Arrest Volume & Key Factors for Success

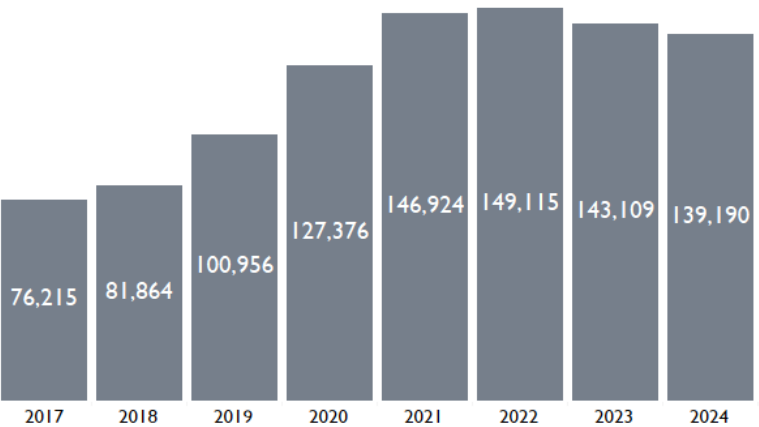
## Arrest Volume & Data Capture

Similar to national volumes of out-of-hospital cardiac arrest, Dane County has seen a slight decrease since 2022. As seen in these visuals, 2024 had 361 non-traumatic cardiac arrest incidents submitted for Dane County. The success of this program is dependent on the excellent data submitted by EMS providers throughout our system. Thank you for your commitment to submitting high-quality and complete reports!

Number of Cardiac Arrest Incidents by Year - Dane County



Number of Cardiac Arrest Incidents by Year - National



## Key Factors to Success

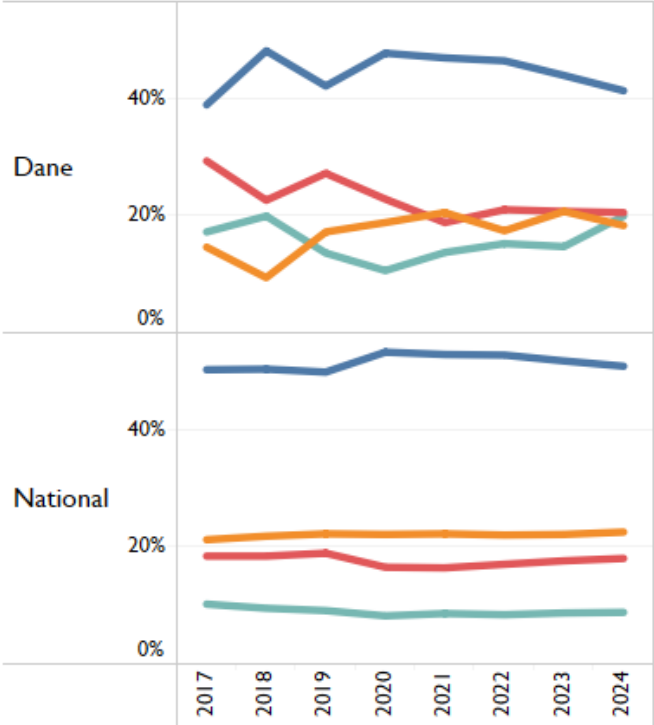
<div><b><u>Bystander CPR</u></b></div> <div></div>	<p>2024 had good bystander chest compression rates (55.7%). In 2024, patients in Dane County who received bystander CPR had a survival rate nearly twice as high as those who did not (15.3% vs. 8.6% respectively).</p>
<div><b><u>Bystander AED Use</u></b></div> <div></div>	<p>117 of the 361 (32.4%) of out-of-hospital cardiac arrests had an Automated External Defibrillator (AED) placed prior to the arrival of EMS. Of these incidents, only 19 of the 117 (16.2% of all incidents with an AED prior to EMS arrival) had the AED placed by a bystander. Bystander AED use continues to be an opportunity to improve in Dane County.</p>



# Arrest Characteristics

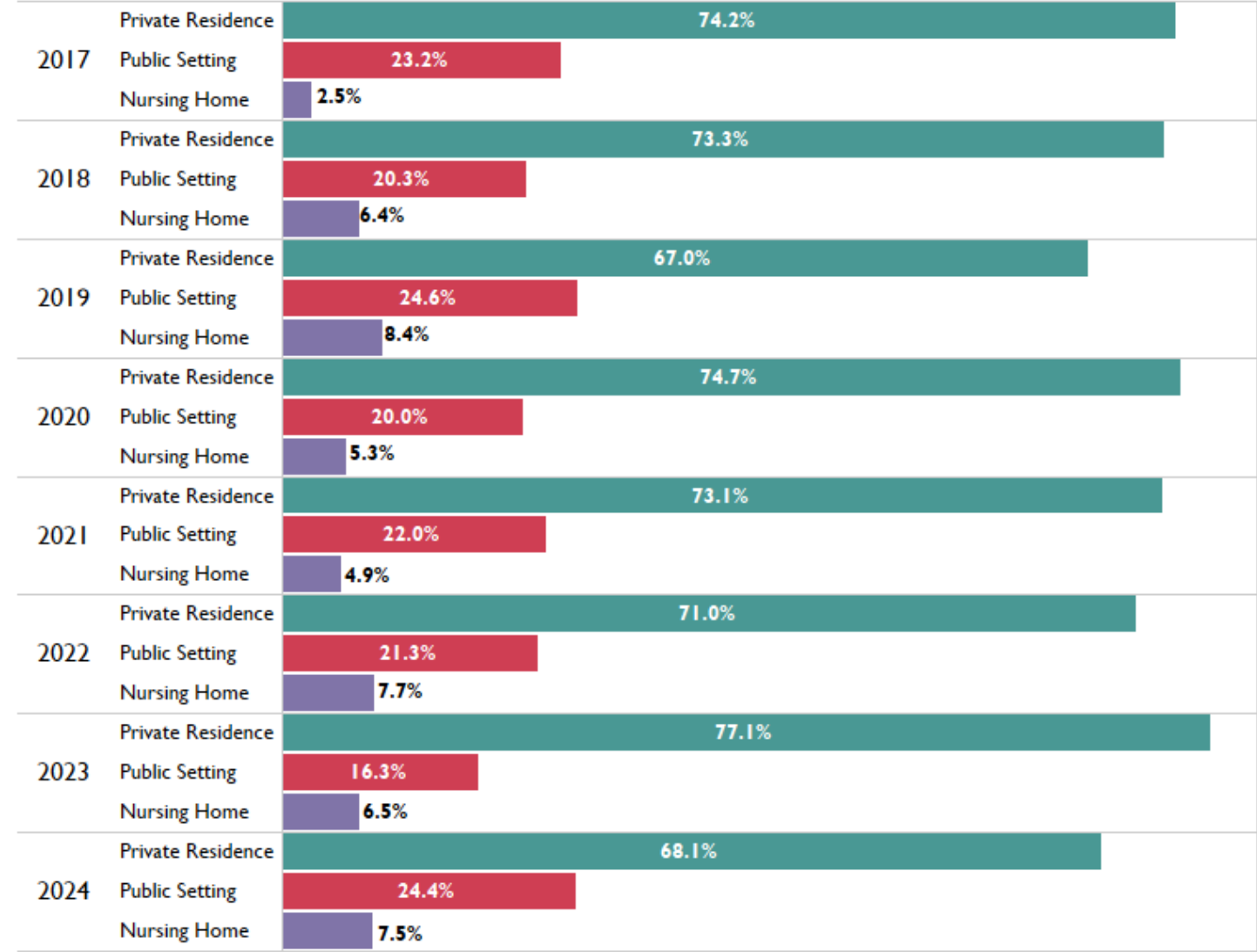
## Initial Arrest Rhythm

Asystole has consistently been the most common initial rhythm over time. Dane County has seen more fluctuation in of each of these cardiac rhythms when compared to national data. Both Dane and National data see a slight decrease in the share of asystole in the past three years, with a very slight increase in initially shockable rhythms since 2022.



## Arrest Location

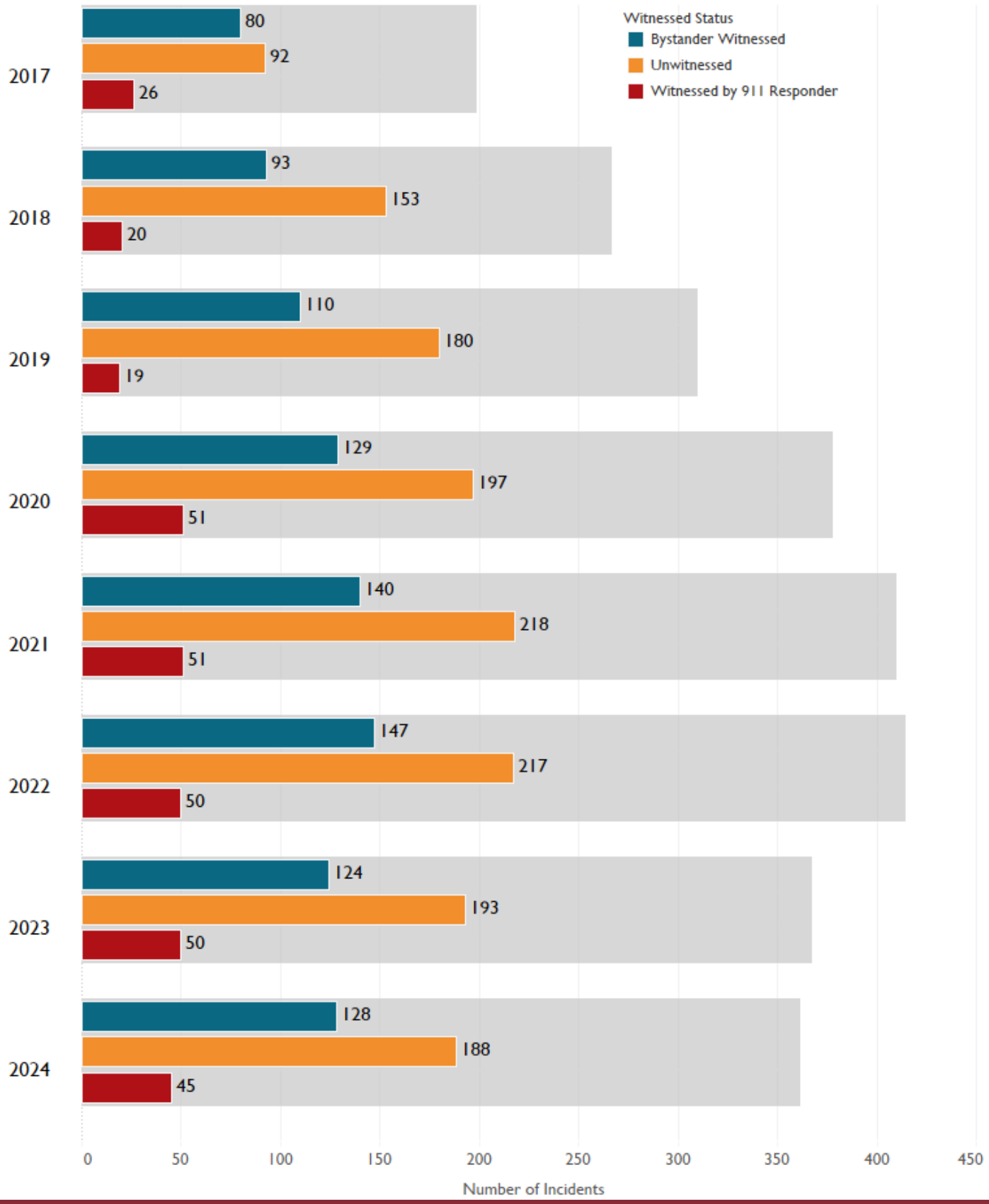
There was an increase in the share of cardiac arrests in public settings in 2024, similar to pre-pandemic levels.



# Arrest Characteristics—Continued

## Arrest Witnessed Status

A majority of OOHCA events are unwitnessed. Below is the year-over-year share of volume for each witnessed status against each year's total volume of incidents.

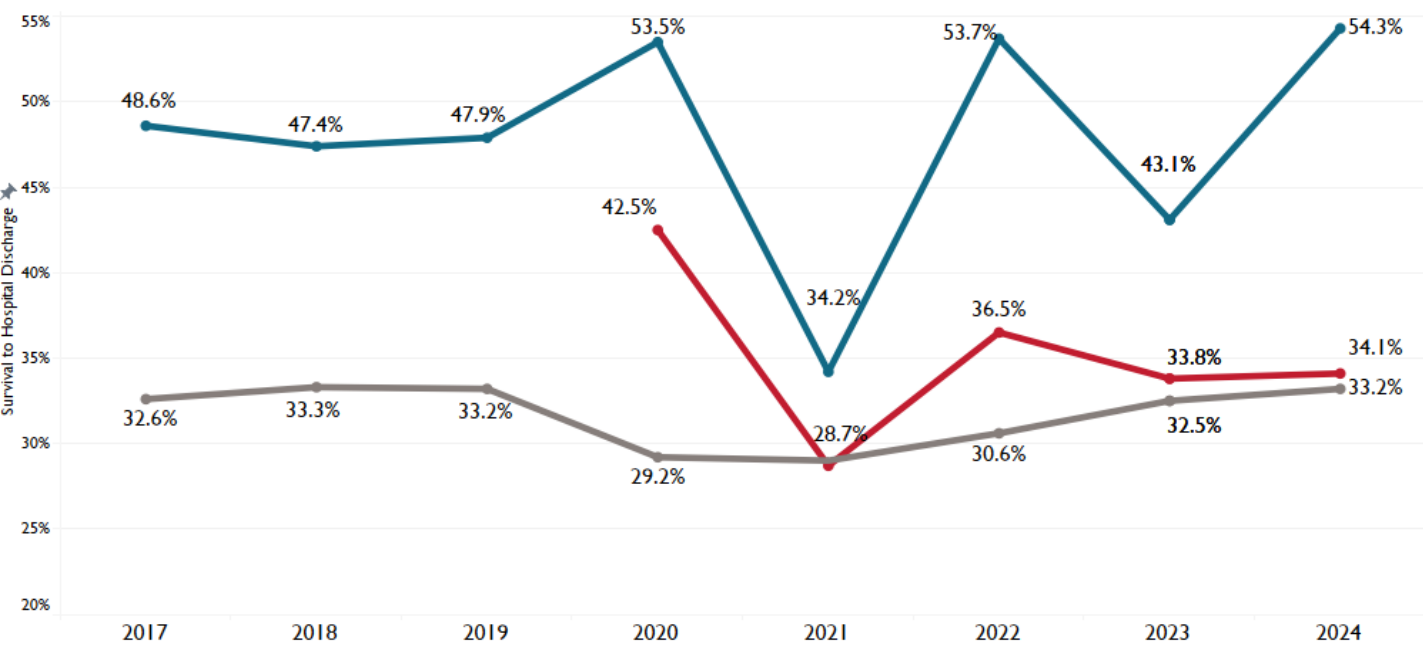


# Survival & Patient Outcomes—2024 CARES OUTCOMES

## Utstein & Utstein Bystander Survival by Year

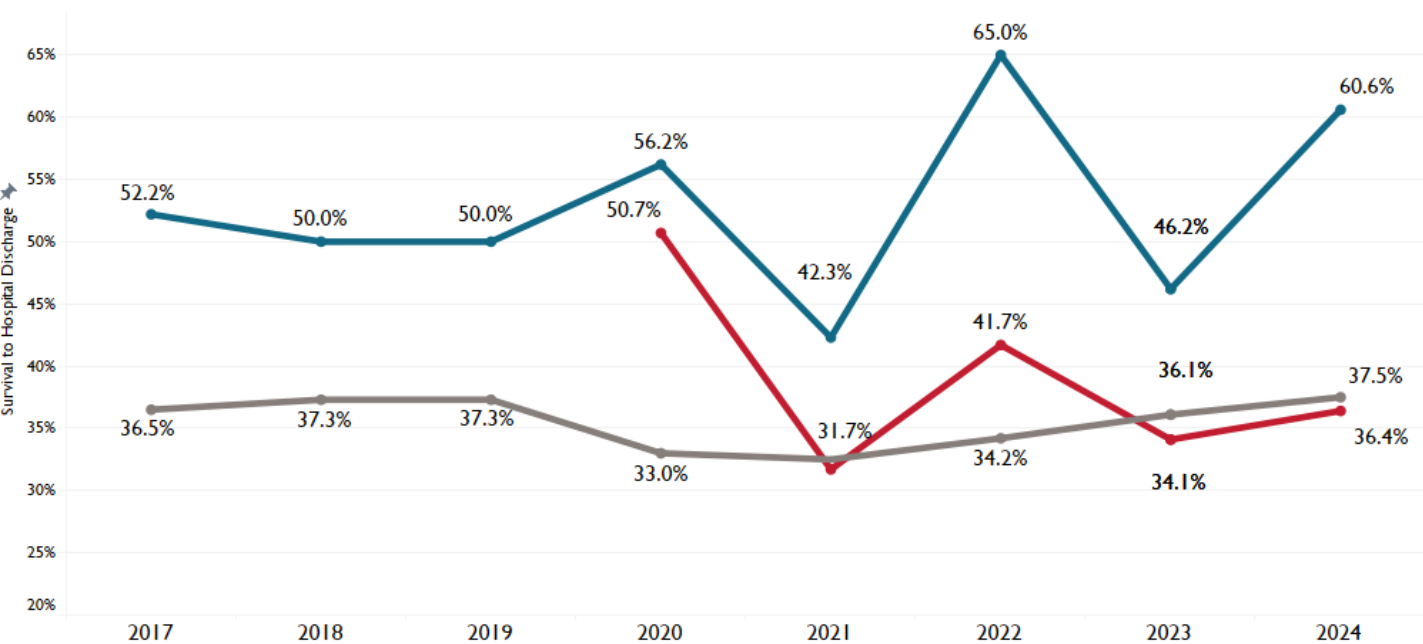
Dane County has consistently had higher Utstein<sup>1</sup> and Utstein Bystander<sup>2</sup> survival rates compared to national and state values. Dane County's 2024 Utstein survival is our highest to date at 54.3% of patients with a witnessed arrest in a shockable rhythm surviving to hospital discharge. There were also exceptional survival rates for patients who receive bystander intervention.

Utstein Survival Rate (Dane-Wisconsin-National)



<sup>1</sup>These incidents are witnessed by a bystander and found in a shockable rhythm.

Utstein Bystander Survival Rate (Dane-Wisconsin-National)



<sup>2</sup>These incidents are witnessed by a bystander, found in a shockable rhythm, and received some bystander intervention (CPR and/or AED application).



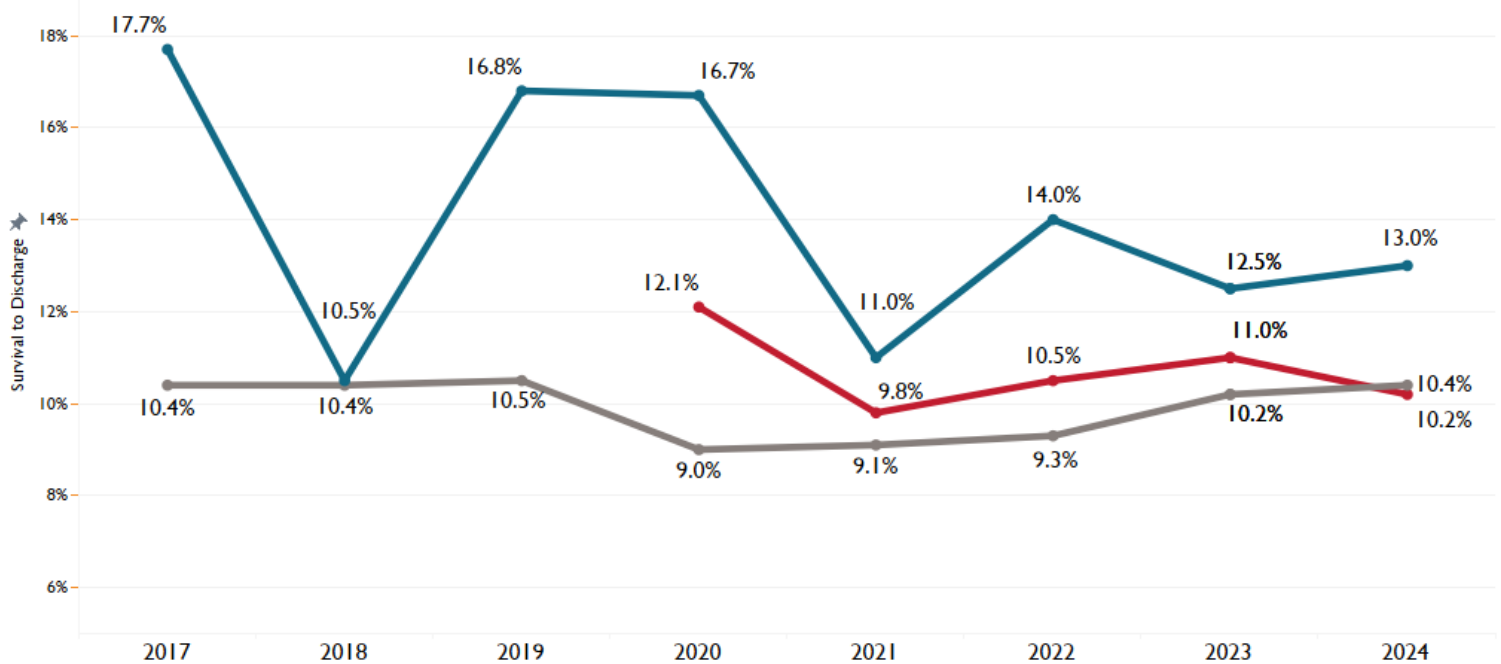


# Survival & Patient Outcomes—2024 CARES OUTCOMES

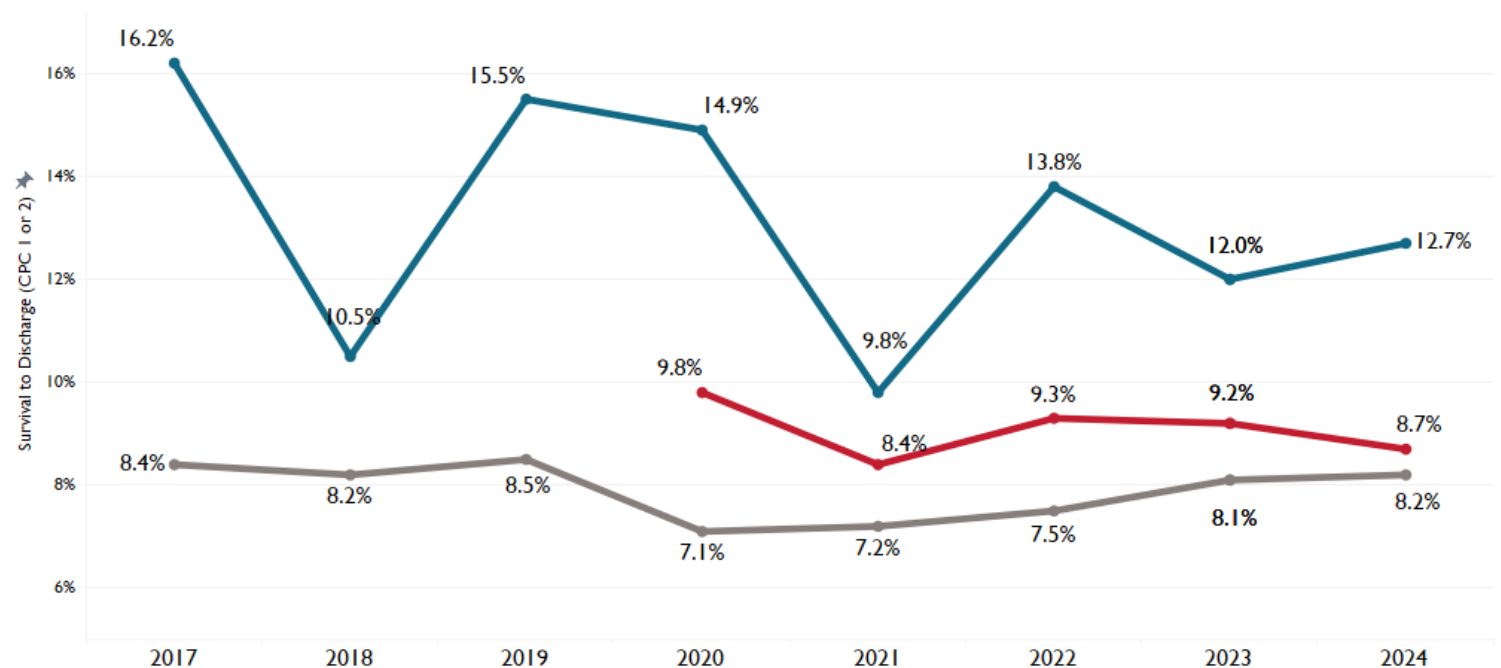
## Overall Survival & Neurological Outcomes

Dane County has held a five year average survival rate to hospital discharge of 12.6% compared to 9.8% nationally. Both Dane County and national data have slightly lower rates of survival to discharge with a good neurological outcome (five year average: Dane County 12.1%, national 7.8%). Additionally, 98% of these survivors returned to a high quality of life after hospital discharge in 2024.

Patient Survival to Hospital Discharge Rate (Dane-Wisconsin-National)



Patient Survival to Hospital Discharge With Good Neurological Outcomes Rate (Dane-Wisconsin-National)

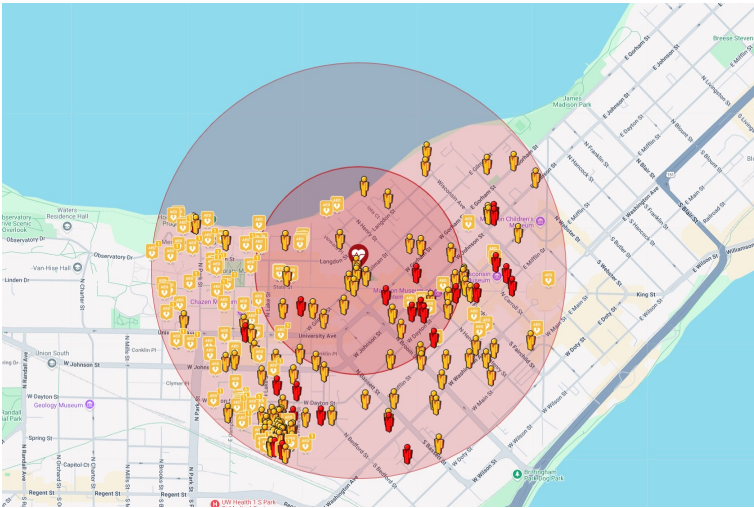


# Public Engagement & PulsePoint

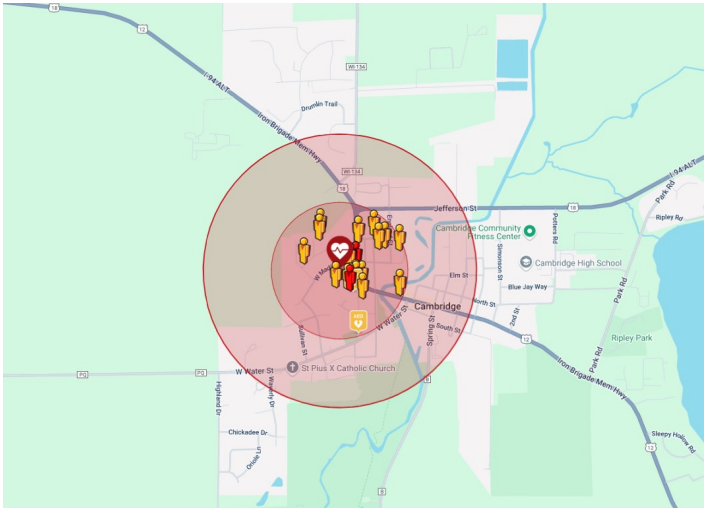
## Dane County is a PulsePoint Connected Community!

Chances for survival increase when early CPR and defibrillation are available. The PulsePoint App helps connect the public and off-duty first responders (known as Professional Responders) to those in need of CPR and AEDs. As of May 2025, our community has **829** Professional Responders, which is a great example of our responders' commitment to community safety on and off the job!

In 2024, our PulsePoint connection processed:



An incident in Downtown Madison with **124** responders notified!



An incident in the Village of Cambridge with **21** responders notified!

## Helpful Links & Contact Information

About CARES: <a href="https://mycares.net/sitepages/aboutcares.jsp">https://mycares.net/sitepages/aboutcares.jsp</a>	About DCEMS: <a href="https://em.countyofdane.com/EMS">https://em.countyofdane.com/EMS</a>
Download PulsePoint: <a href="https://em.countyofdane.com/CPR/pulsepoint/download">https://em.countyofdane.com/CPR/pulsepoint/download</a>	Contact The Author: <a href="mailto:Anderson.Eric@danecounty.gov">Anderson.Eric@danecounty.gov</a>
Register an AED: <a href="https://aedregistry.pulsepoint.org/index.php">https://aedregistry.pulsepoint.org/index.php</a>	Contact Dane County EM: <a href="https://em.countyofdane.com/contact">https://em.countyofdane.com/contact</a>

