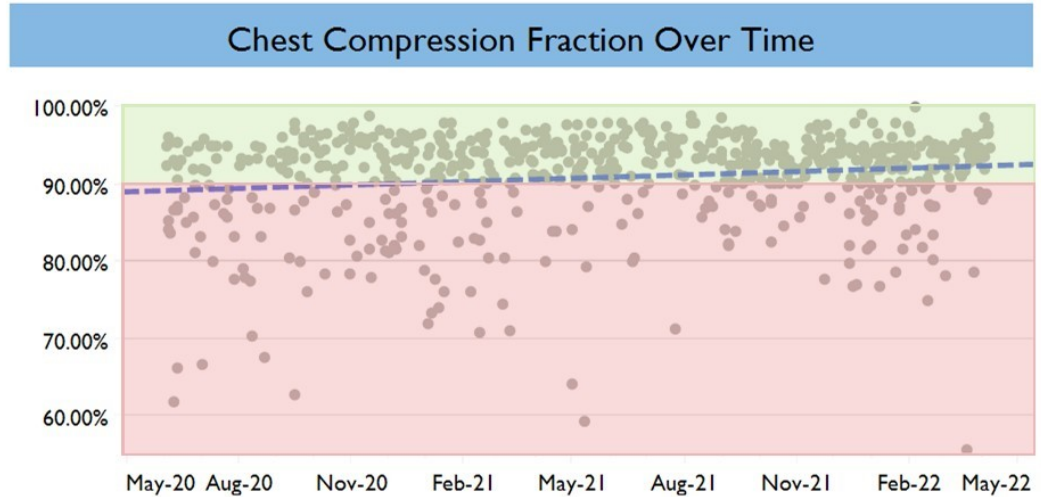


HPCPR – Chest Compression Fraction

Time on the chest matters during resuscitations! In Dane County, **we have seen a positive trend** in our chest compression fractions. Over the past two years, **72% of our resuscitations met the goal CCF of 90%**. Three easy ways to increase your CCF are:

- 1) Practice applying mechanical CPR as often as possible.
- 2) Charge your monitor before every rhythm check.
- 3) Palpate a femoral pulse with compressions and hold that spot during your rhythm checks to help quickly determine if the patient has a pulse.



April Viz Quiz: Match Determinant Code with Descriptor!

Dane County Public Safety Communications utilizes the Priority Dispatching system by the National Academy of Emergency Dispatch. It includes the alphanumeric codes such as 1-D-1 (i.e. 1-Delta-1), the generic text descriptors for each code, and any applicable suffixes (special situations). Telecommunicators utilize a software platform called ProQA, essentially as a resource calculator: The appropriate resources are dispatched based on the Key Question answers that are selected. There's obviously a lot more to it than that, but that's the foundation. The dispatcher doesn't need to memorize the response criteria for every conceivable situation!

- | | | |
|---|---|--|
| A. Abdominal Pain/Problems | F. Heart Problems/AICD | K. Stab/Gunshot/
Penetrating Trauma |
| B. Breathing Problems | G. Hemorrhage | L. Unconscious/Fainting |
| C. Cardiac or Respiratory
Arrest/Death | H. Overdose/Poisoning | M. Hazmat |
| D. Choking | I. Pregnancy/
Childbirth/Miscarriage | N. Motor Vehicle Collision |
| E. Electrocution/Lightening | J. Sick Person | |

Match the descriptor with the correct code:

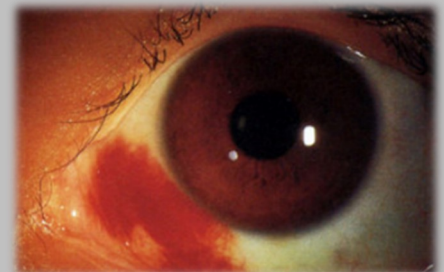
23	9	61	77
1	11	31	24
15	21	19	26
27	6		

Submit your answers at <https://www.surveymonkey.com/r/Z2W92Q2> for the chance to win a prize!

March Viz Quiz Follow-Up

D. Subconjunctival Hemorrhage

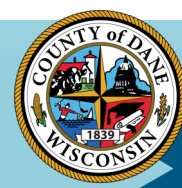
- Patients with subconjunctival hemorrhage are often times asymptomatic, and they may be unaware of the problem until they look in the mirror or someone points out the problem. But the appearance can be quite alarming!
- May occur spontaneously or with Valsalva associated with coughing, sneezing, straining or vomiting. The diagnosis is confirmed by normal visual acuity and the absence of discharge, photophobia or foreign body sensation.
- The blood is typically resorbed over 1-2 weeks, depending on the amount. No specific therapy is indicated.
- If the condition is recurrent, the patient has a bleeding disorder, or is on anticoagulation they should be referred to their primary care physician for evaluation of underlying coagulopathy.
- Subconjunctival hemorrhage in the setting of blunt trauma must be evaluated for the possibility of ruptured globe or retrobulbar hemorrhage (both vision threatening emergencies!).



Congratulations to Lisa from Deer-Grove for winning the March Viz Quiz!

Dane County EMS Newsletter

April, 2022



National Public Safety Telecommunicators Week - Recognizing Our First First Responders

Being an emergency call taker or dispatcher takes skill, intense training, compassion, and patience to keep our emergency system working efficiently. These incredibly competent individuals provide caring customer service, effective patient/caller/victim care, and serve as the sole authority over an emergency scene until the response team arrives. From April 10-16th we celebrated these people who play such a key role in public safety, but we recognize their efforts and commitment everyday. Thank you to all telecommunicators, but especially those serving our Dane County residents and Public Safety!



heroes
sense voice calltaker
Happy goldline thankful
help calm heard service
dedication humor safe seen
Telecommunicator
dependable commitment calls
unseen Week
critical appreciation
dispatcher challenging

Case Vignette of the Month

You are paged to a 23D, Overdose, unconscious person. Prior to your arrival, law enforcement gave naloxone x 2 with no response. Upon your arrival, law enforcement is providing breaths via BVM to an approximate 45-year-old female on the living room floor of a residential home. Per family member, she is being treated for breast cancer currently and just had surgery yesterday. She was last seen an hour ago resting on the couch watching TV, but family member is worried she may have taken too much of her pain medications as he knows she was struggling with the pain overnight. On your initial assessment, the patient is now pulseless.

Discussion:

- What are your priorities in managing this patient?
- What medications would be most valuable to consider in the management of this patient?
- Any additional considerations in regards to where you work the arrest, disposition/termination criteria or overall management of the cardiac arrest?

Kudos!

Healthcare personnel provide exceptional patient care every day. Whether it's using critical thinking, managing incidents, or going above and beyond to provide for a patient, we want to recognize those moments. Share these stories with us at [this link](#) for a member, crew, or agency to be recognized in a future newsletter.

Dane County EMS Leadership Award

Dane County EMS is accepting nominations for the Robert L. Brunning Award of Excellence for 2020, 2021, and 2022. Nominations should be based on a pattern of leadership and activities that have culminated in an exceptional improvement of the EMS system. Please submit your nomination no later than May 10th. Winners will be announced on June 11th at the EMS Week Celebration Event.

[Submit Here](#)

Upcoming Events and Training

5/16-5/21 - EMS Week

5/19, 6:30pm-8:30pm - SSM Health Monthly Training
<http://bit.ly/ssmemstraining>

5/21, 3pm-6pm - EMS Week Celebration Event
Wisconsin Brewing Company

Thank you for reading! For questions, comments, or feedback you can contact the DCEMS office at dcems@countyofdane.com or by calling 608-335-8228. All other staff contact information can be found at em.countyofdane.com/EMS/contactus.